

ROUGH COUNTRY

SUSPENSION SYSTEMS®

Nissan 2017-20 Titan Loaded Strut

Thank you for choosing Rough Country for all your vehicle needs.

Please read instructions before beginning installation. Check the kit hardware against the kit contents shown below. Be sure you have all needed parts and know where they go.

If question exist, please call us @1-800-222-7023. We will be happy to answer any questions concerning this product.

Check all fasteners for proper torque. Check to ensure for adequate clearance between all components.

Periodically check all hardware for tightness.

KIT CONTENTS:
Loaded Struts x2

TOOLS NEEDED:
10mm Wrench or Socket
17mm Wrench or Socket
19mm Wrench or Socket
22mm Wrench or Socket
34mm Socket
Ratchet
Pliers
Jack
Jack Stands

HARDWARE INCLUDED:
10mm-1.25 Nuts x6



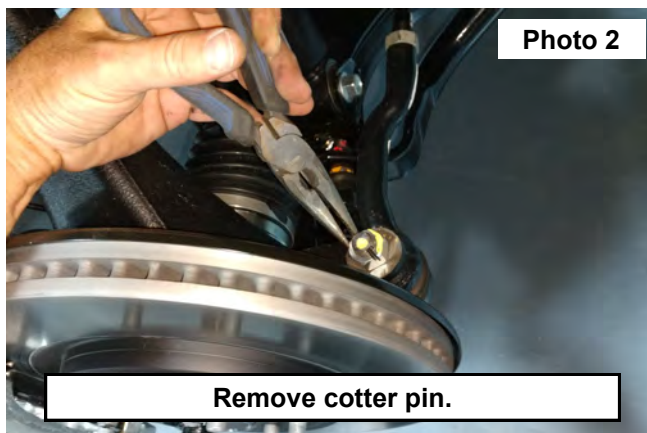
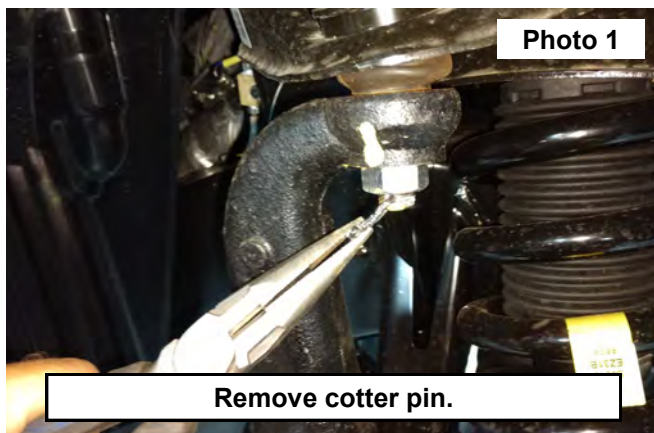
Torque Specs:

Size	Grade 5	Grade 8	Size	Class 8.8	Class 10.9
5/16"	15 ft/lbs	20ft/lbs	6MM	5ft/lbs	9ft/lbs
3/8"	30 ft/lbs	35ft/lbs	8MM	18ft/lbs	23ft/lbs
7/16"	45 ft/lbs	60ft/lbs	10MM	32ft/lbs	45ft/lbs
1/2"	65 ft/lbs	90ft/lbs	12MM	55ft/lbs	75ft/lbs
9/16"	95 ft/lbs	130ft/lbs	14MM	85ft/lbs	120ft/lbs
5/8"	135ft/lbs	175ft/lbs	16MM	130ft/lbs	165ft/lbs
3/4"	185ft/lbs	280ft/lbs	18MM	170ft/lbs	240ft/lbs

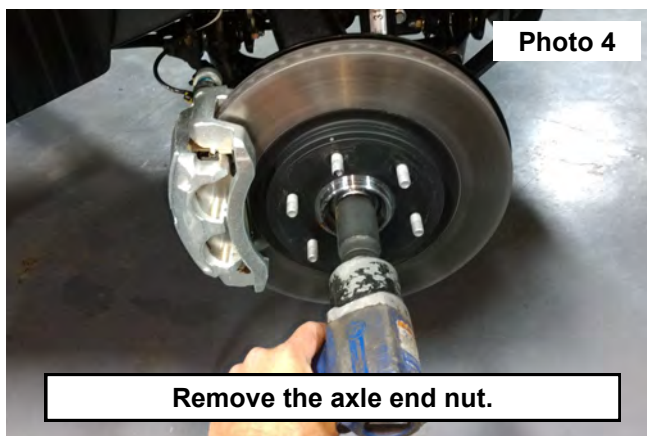
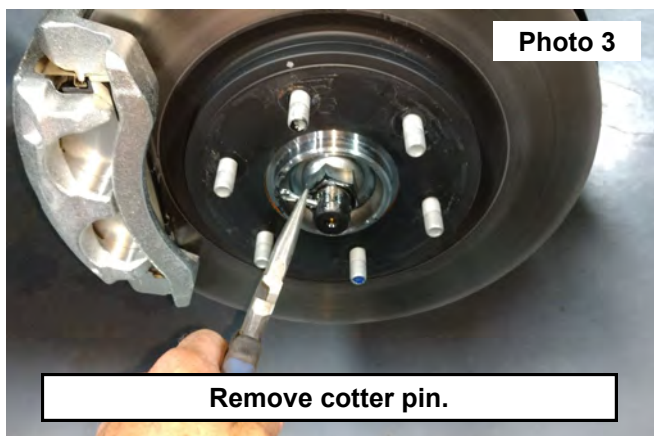


INSTALLATION INSTRUCTONS

1. Jack up the front of the vehicle and support the vehicle with jack stands, so that the front wheels are off the ground.
2. Use a 21mm socket to remove the front wheels/ tires.
3. Remove the cotter pin from the upper control arm ball joint and retain. **See Photo 1.**
4. Remove the cotter pin from the tie rod end ball joint and retain. **See Photo 2.**



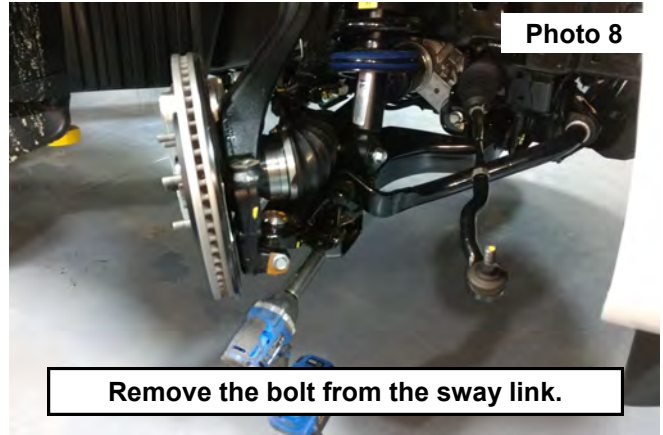
5. Remove the cotter pin from the axle and retain. **See Photo 3.**
6. Using a 34mm socket remove the nut from the axle and retain. **See Photo 4.**



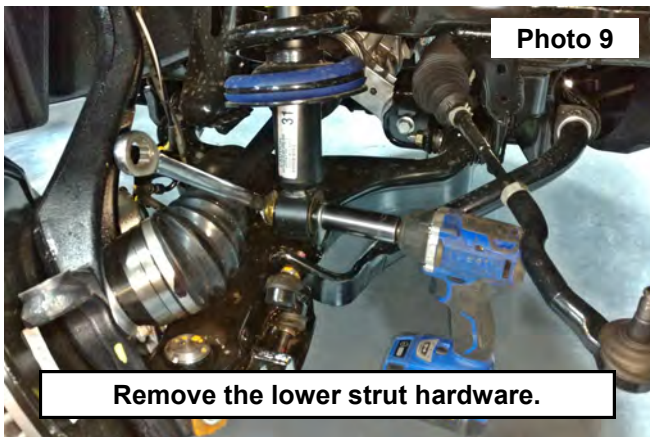
7. Using a 22mm socket loosen the tie rod end nut. Use a hammer to unseat the taper then remove the nut from the ball joint. **See Photo 5.**
8. Using a 10mm wrench remove the bolt securing the ABS and Brake line bracket to the knuckle. **See Photo 6.**



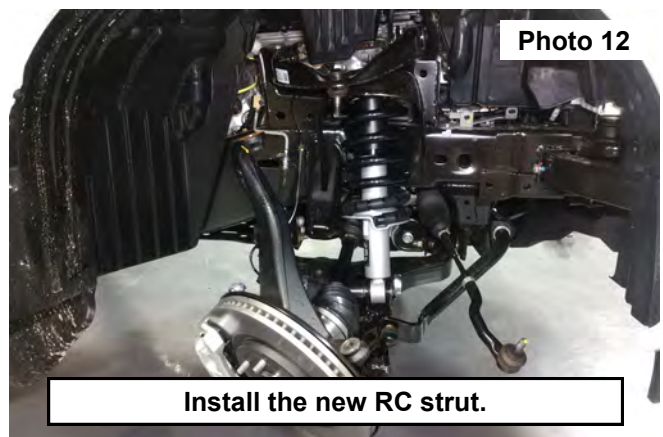
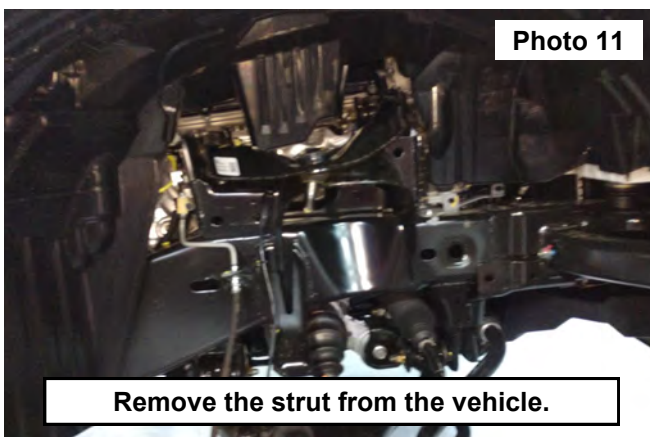
9. Support the lower control arm using a jack to take pressure off of the upper control arm.
10. Loosen the upper control arm nut using a 22mm socket. Then use a hammer to unseat the ball joint taper from the knuckle, remove the nut from the ball joint and retain. **See Photo 7.**
11. Lower the jack and remove the ball joint from the knuckle.
12. Using a 17mm socket remove the nut from the sway link. Retain hardware. **See Photo 8.**
13. Using a 19mm wrench and socket, remove the lower strut hardware and retain. **See Photo 9.**



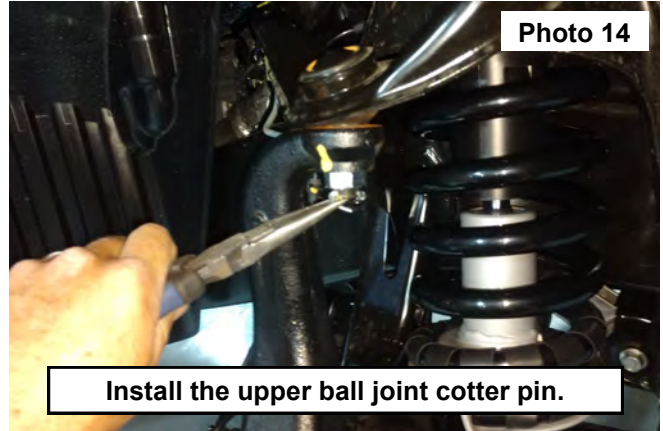
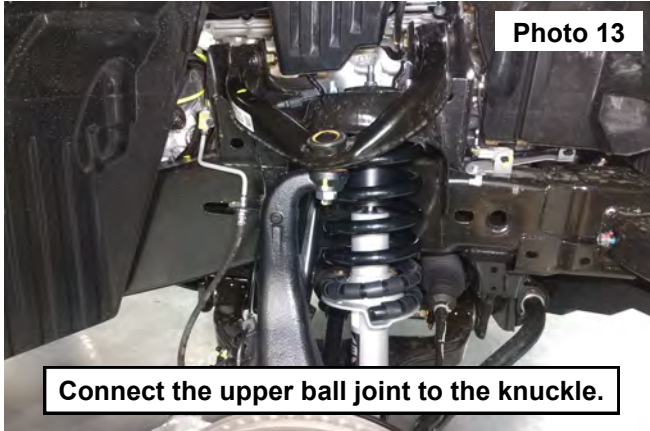
14. Support the strut and remove the (3) upper strut nuts using a 14mm wrench. **See Photo 10.**
15. Remove the strut from the vehicle and set aside. **See Photo 11.**



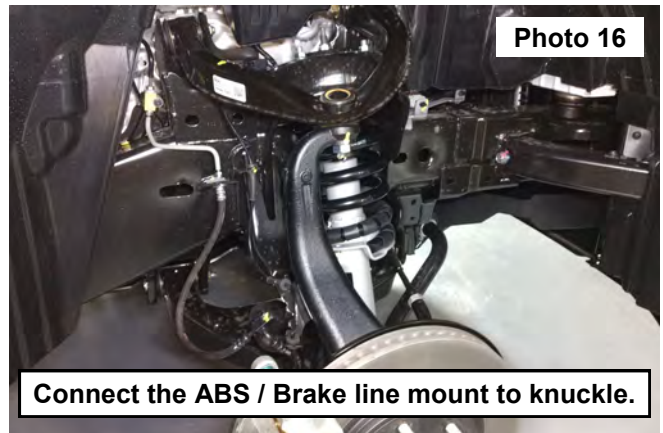
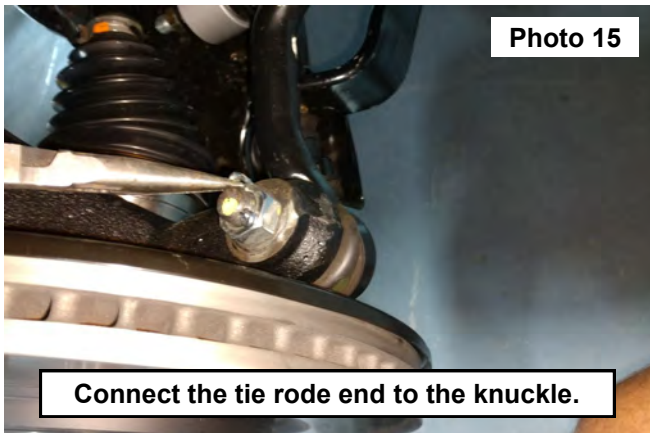
16. Install the new RC strut into the vehicle, secure the top of the strut using (3) of the supplied nuts. Tighten using a 14mm wrench. **See Photo 12.**
17. Install the OE lower strut to the control arm hardware. **DO NOT TIGHTEN AT THIS TIME.**



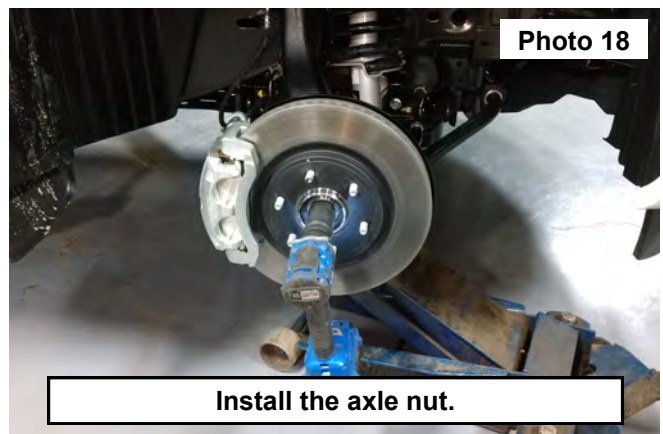
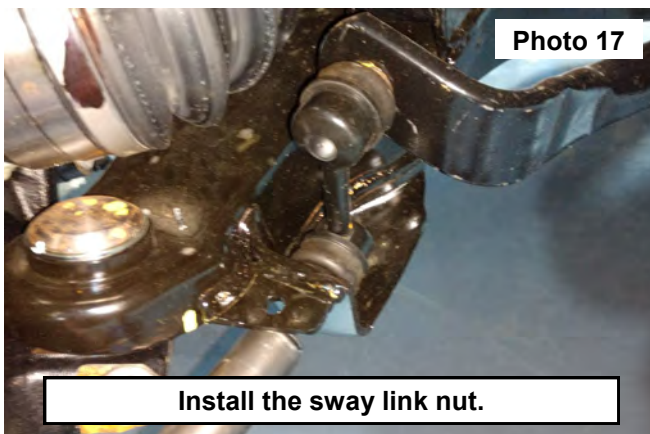
18. Connect the upper control arm ball joint to the knuckle using the OE nut, tighten using a 22mm socket. **See Photo 13.**
19. Install the retained cotter pin into the upper ball joint. **See Photo 14.**



20. Connect the tie rod end to the knuckle and tighten using a 22mm socket. Then secure using the retained cotter pin. **See Photo 15.**
21. Connect the ABS / Brake line mount to the knuckle using the retained hardware using a 10mm wrench. **See Photo 16.**



22. Install the nut onto the sway link to the lower control arm mount using a 17mm socket. **See Photo 17.**
23. Install the axle nut using a 34mm socket. **See Photo 18.**
24. Install the wheels and tires, lower the vehicle onto the ground.
25. Tighten the lower strut mount using a 19mm wrench and socket.



By purchasing any item sold by Rough Country, LLC, the buyer expressly warrants that he/she is in compliance with all applicable, State, and Local laws and regulations regarding the purchase, ownership, and use of the item. It shall be the buyers responsibility to comply with all Federal, State and Local laws governing the sales of any items listed, illustrated or sold. The buyer expressly agrees to indemnify and hold harmless Rough Country, LLC for all claims resulting directly or indirectly from the purchase, ownership, or use of the items.

