



Installation Instructions for  
**717865**  
CAT-BACK FFX SINGLE OUT  
FITS: 2000-2006 WRANGLER TJ  
WITH 4.0L ENGINES ONLY

**OVERVIEW:**

1. Please take a moment to read and understand these instructions before installing your Flowmaster performance system.

NOTE: Please inventory all parts before starting the installation process and call our tech line to report any missing parts. This will help avoid potentially stranding your vehicle until any missing replacement parts arrive.

PART NO.	DESCRIPTION	QTY.
71416-533	Muffler	1
86563M	Tailpipe	1
PK987	Hardware Pack includes:	1
MC250BS	2½" Stainless Band Clamp	1
HW502	7/16" Hanger Keeper	2
HW106	M10-1½" Hex Nut	2
HW303	3/8" Flat Washer	2

**REMOVE STOCK EXHAUST SYSTEM:**

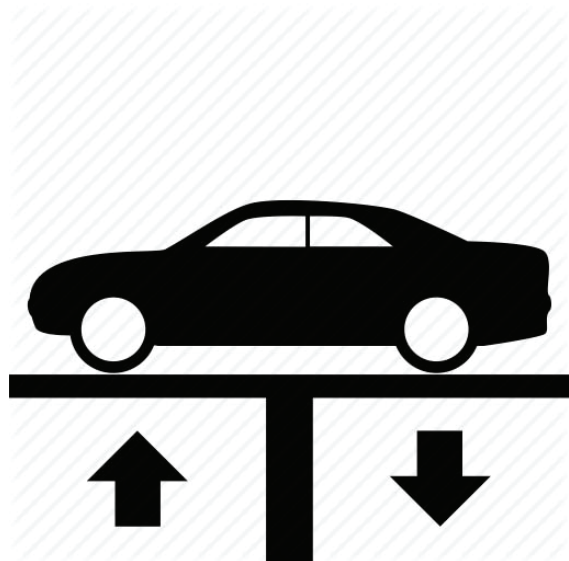
2. Raise vehicle up on a hoist or rack to working height. If you don't have access to a hoist or rack, support vehicle with jack stands.

**WARNING:**

Avoid serious burns! Allow your vehicle time to cool completely before touching any factory engine components.

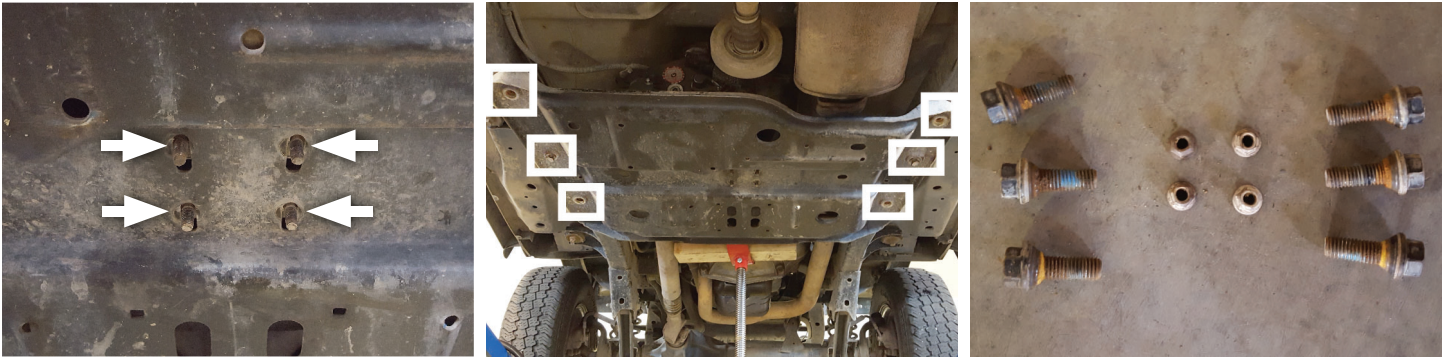
**To ease disassembly of factory components:**

- Apply penetrating lubricant to mounts, bolts and clamps before you remove them.
- Use stands as necessary to support parts as you detach them from your vehicle.



**WARNING:**  
You must support transmission using a jack before beginning removal process to avoid serious injury.

- 3. Remove nuts (x4) from skid plate, then remove bolts (x6) and skid plate from vehicle.



- 4. Cut muffler outlet where shown.



- 5. Dismount factory tailpipe wire hangers then remove tailpipe from vehicle.



- Remove nuts (x2) from flanges then remove factory muffler from vehicle.



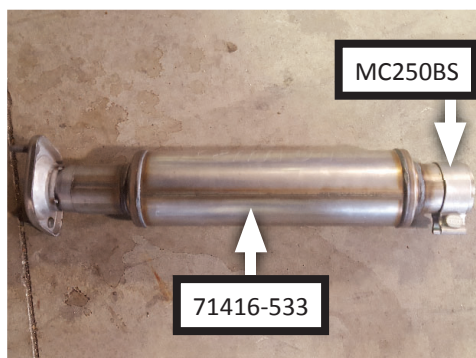
## INSTALL FLOWMASTER EXHAUST SYSTEM

- Remove nuts from stock and Flowmaster clamps, apply anti-seize compound to bolts and re-install nuts.

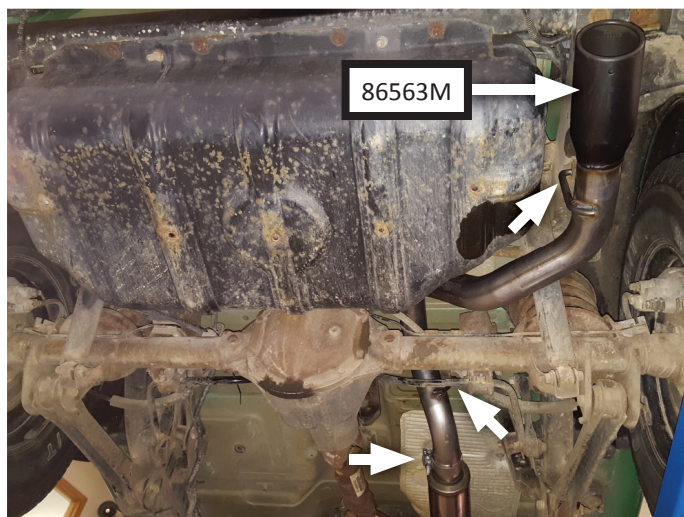
**NOTE:** The image in this step is intended for illustrative purposes only and may or may not accurately reflect components included in your kit.



- Place clamp (MC250BS) on muffler (71416-533) outlet. Fasten muffler onto catalytic converter using (x2 ea.) flat washers (HW303) and hex nuts (HW106).



- Route **tailpipe (86563M)** over axle and connect it to muffler outlet. Mount wire hangers into isolators (x2) then tighten clamp enough to allow for adjustment.



- Adjust exhaust components to provide a satisfactory fit. Maintain a minimum of  $\frac{1}{2}$ " clearance around all components of exhaust system, keeping in mind suspension, travel and vibration. After making any required adjustments, securely tighten the clamps.
- Slide **hanger keepers (x2 HW502)** onto the end of each hanger to prevent components from slipping out of their rubber mounts.
- We recommend applying a one inch tack weld to all slip-fit connections for a more secure installation. You may also apply high temperature paint over welded areas to prevent rust and premature corrosion.

Congratulations, the installation of your FLOWMASTER performance exhaust system is now complete!



NOTE: Flowmaster maintains a highly trained technical service department to answer your technical questions, provide additional product information and offer various recommendations.

Technical Service: (707) 544-4761  
Monday – Friday: 7:30 am to 5:00 pm Pacific Time  
(Closed Saturday and Sunday)





Installation Diagram for  
**717865**  
CAT-BACK FFX SINGLE OUT  
FITS: 2000-2006 WRANGLER TJ  
WITH 4.0L ENGINES ONLY

